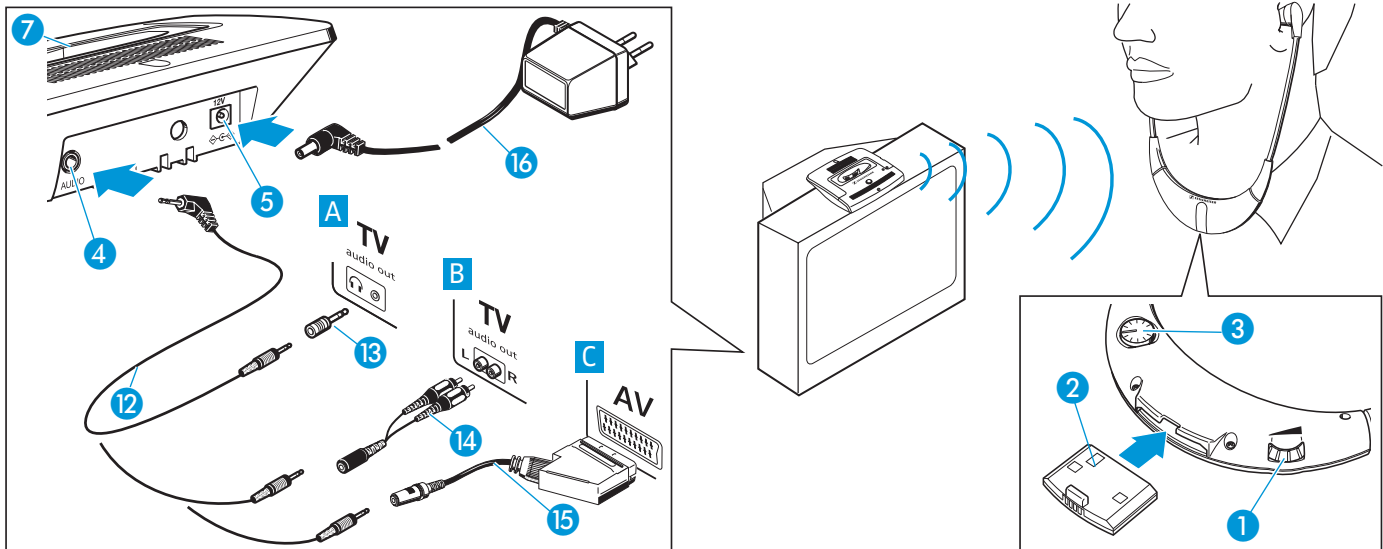


Quick instructions IS 410

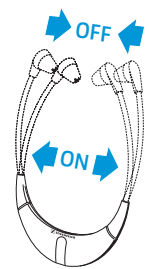


Connecting the system components

- ▶ Plug in one end of the connecting cable (12) to the socket on your sound source (e.g. television). If necessary, use one of the adapters (13, 14 or 15) (not included). Plug in the other end of the connecting cable (12) to the blue socket (4) on the transmitter.
- ▶ Connect the mains unit (16) to the transmitter (5) and to the mains.
- ▶ Place the receiver into the transmitter's charging compartment (7).
- ▶ Before you use the rechargeable battery (2) for the first time, charge it until the LED (🟢) lights up green.
- ▶ Adjust the volume of on your sound source to a sufficient (medium) level.

Switching on and using the stethoset receiver

- ▶ The receiver automatically switches on when you pull the earbows apart. First adjust the volume to a low level. This protects your hearing from damage. Then put the receiver on and adjust the volume to a comfortable level.
- ▶ Use the balance control (3) to adjust the volume between the left and right ear.
- ▶ If you cannot hear anything through the receiver, increase the volume of on your sound source.



Switching the stethoset receiver off

- ▶ The receiver automatically switches off when you take it off.

Charging the stethoset receiver

- ▶ Place the receiver into the transmitter's charging compartment (7) without exerting too much pressure. With a fully charged battery, the operating time is approx. 16 hours.

For details on the use of the IS 410, please refer to the enclosed operating instructions.